



**FEATURES**

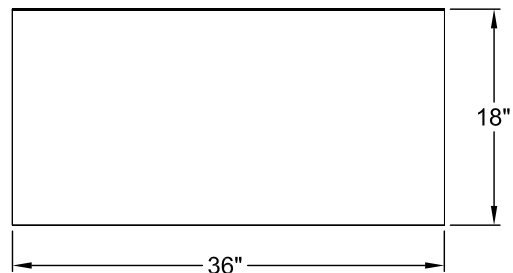
- 16 Ga. Stainless Steel Shelf.
- 14 Ga. Stainless Steel Gussets.
- Corners Welded, Ground and Polished.

**INSTALLATION NOTE**

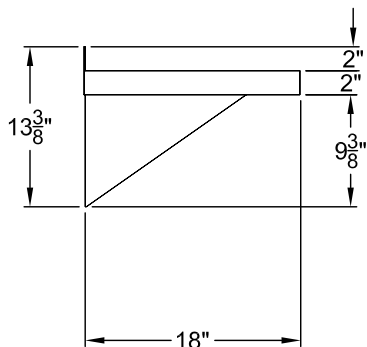
- General Contractor to Provide Sufficient Wall Backing to Accommodate 250 Pounds..



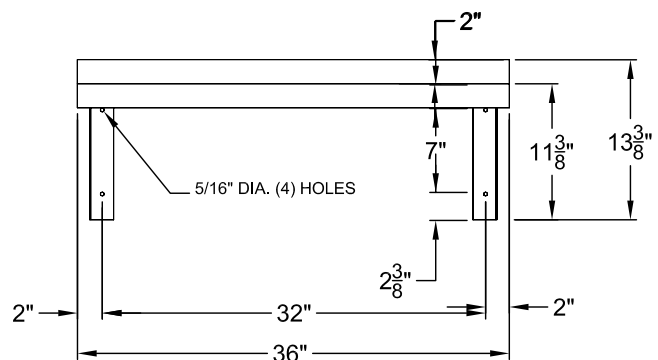
Shown Model: PE-34WB



Plan



Side



Front

**Model: PE-34WB**

